

ORDERING CODES RMF AIR CONDITIONERS

Spare parts and accessories

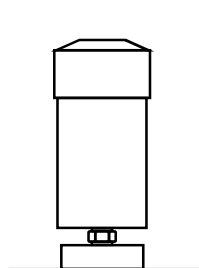


The items mentioned below should be ordered
separate from the basic RMF air conditioner

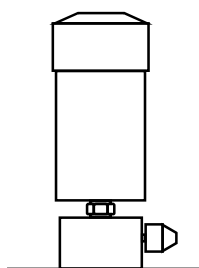
Accessories

Suitable for type

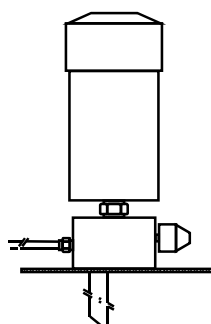
Description	ACL93 and KL93 series	ACL96 and KL96 series	KL121 series	KL122 series
	ORDERING CODE			
Filter minder (indicator + electr. contact and nipple)	9331303			
Filter minder connector (w/o cable) for use with 9331303	9331320			
Mounting plate	KL92		KL1202	
Mounting plate + filter minder port	KL95		KL1205	
Mounting plate + filter minder port + return port	KL91		KL1201	
Mounting plate + filter minder port + suction and return port	KL91SR		N.A.	



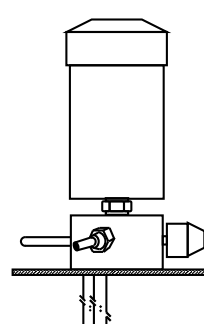
KL 92 / 1202



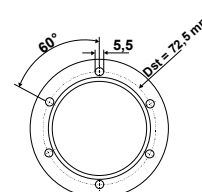
KL 95 / 1205



KL 91 / 1201



KL 91SR



All mounting plates are drilled according pattern: DIN 24557/2

Spare parts

Suitable for type

Description	ACL93 and KL93 series	ACL96 and KL96 series	KL121 series	KL122 series
	ORDERING CODE			
Air filter only	KL90 (incl. seal)		KL120 (excl. seal)	
Seal for filter	N.A.		KL120 seal	
ZR - gel refill in air tight container	KL/ACL 93 series Refill ZR gel 300 cc	KL/ACL 96 series Refill ZR gel 600 cc	KL121 series Refill ZR gel 1000 cc	KL121 series Refill ZR gel 2000 cc
Active Coal refill in air tight container *	KL/ACL 93 series Refill Active Coal 300 cc	KL/ACL96 series Refill Active Coal 300 cc	KL121 series Refill Active Coal 300 cc	KL122 series Refill Active Coal 600 cc
Spare kit including ZR-gel, air filter, seal and foam pads	Spare kit KL93R/ ACL93R	Spare kit KL96R/ ACL96R	Spare kit KL121R	Spare kit KL122R

* Please note that smallest Active Coal refill available is 300 cc container. To be used for 93, 96 and 121 series.

Subject to change without prior notice