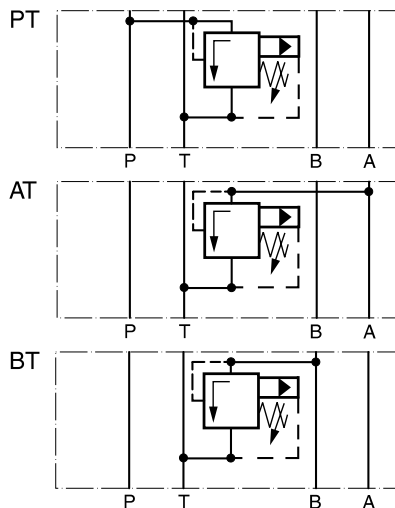


The pilot operated pressure relief valves from the Parker Manapak series RM are in sandwich design for easy configuration of stack systems. Depending on type, pressure limiting can be achieved in ports P, A or B with unloading to port T.

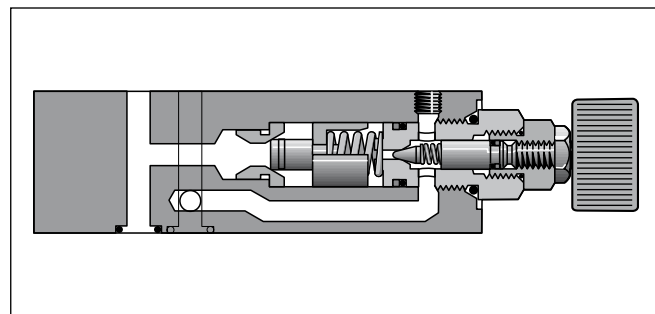
RM valves may only be mounted in the defined mounting position.

Features

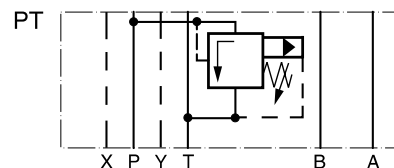
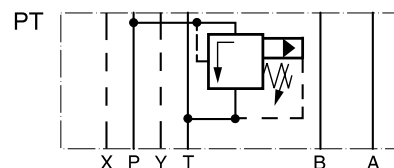
- The valve bodies of the Parker Manapak valve series RM are made of steel.
- The pressure can be set by slotted head screw, knob, or knob with DIN-lock.
- Piloting results in a flat p/Q performance curve.
- The orifices located in the main spool limit the pilot oil flow.

Schematics**RM3-NG10**

RM3



RM3

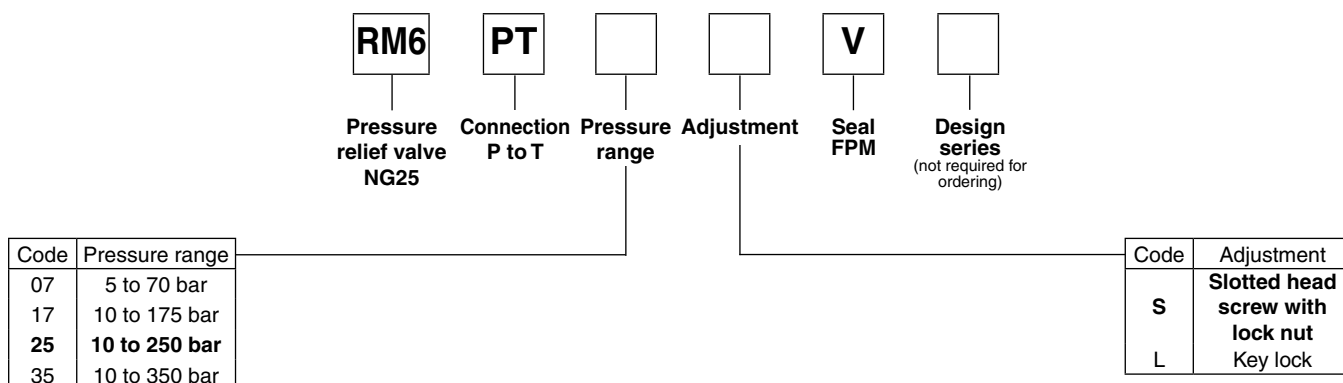
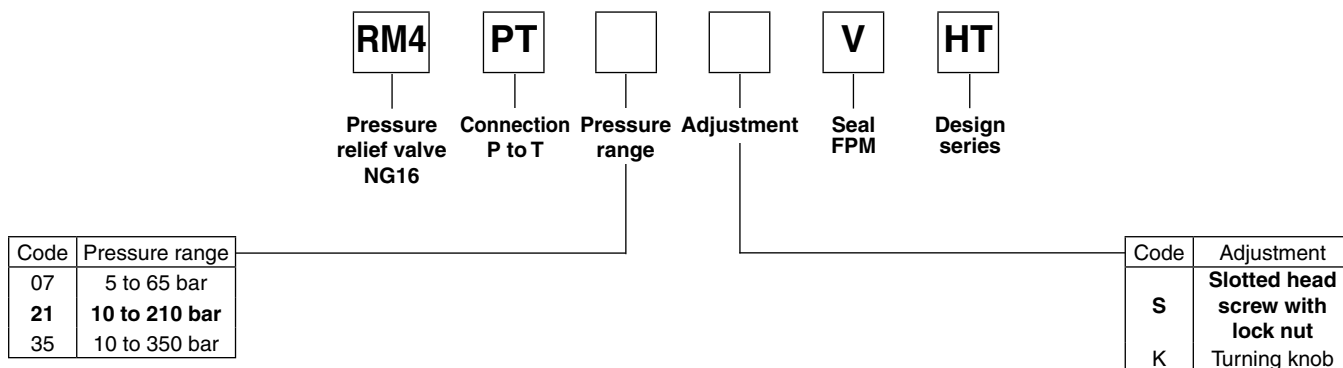
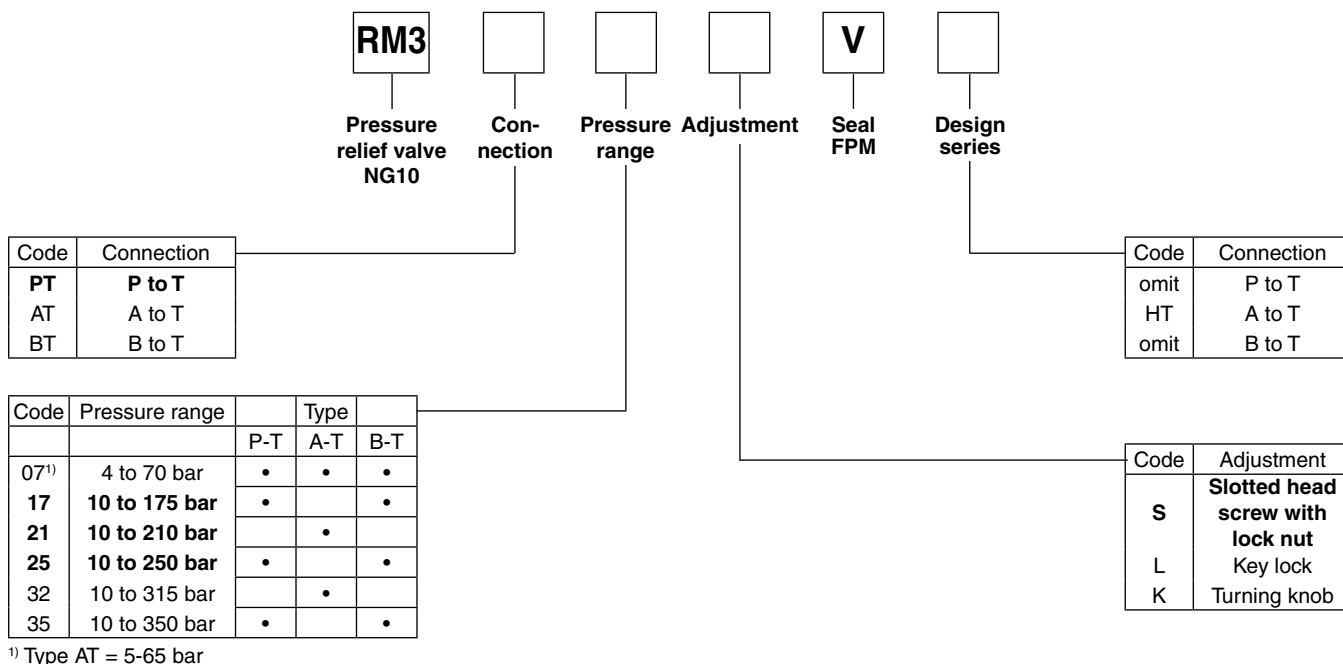
RM4-NG16**RM6-NG25****Technical data**

General				
Design		Pilot operated pressure relief valve		
Actuation		hydraulic		
Size		NG10	NG16	NG25
Mounting interface		ISO 4401		
Mounting position		unrestricted		
Ambient temperature	[°C]	-40...+60		
Weight	[kg]	3.7	4.9	5.9
Hydraulic				
Max. operating pressure	[bar]	350		
Fluid		Hydraulic oil to ISO		
Fluid temperature	[°C]	-20...+80		
Viscosity recommended	[cSt]/[mm²/s]	30...80		
permitted	[cSt]/[mm²/s]	20...380		
Filtration		ISO 4406 : 1999; 18/16/13		

RM_UK.INDD RH_18.12.07

Pilot Operated Pressure Relief Valve Series RM

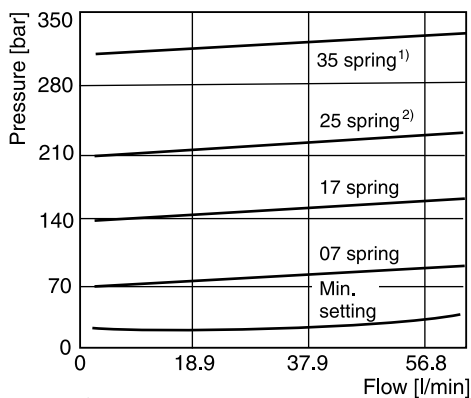
Ordering Code



Bold letters =
Short-term availability

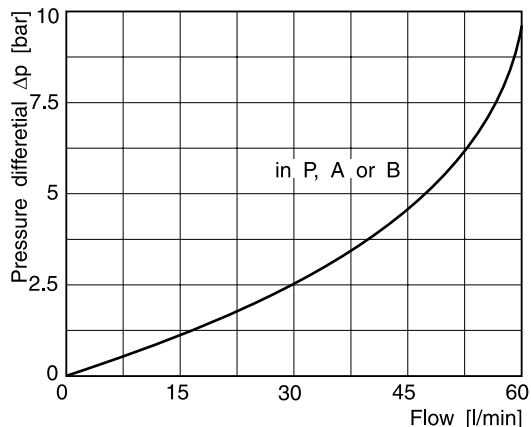
p/Q performance curves

RM3

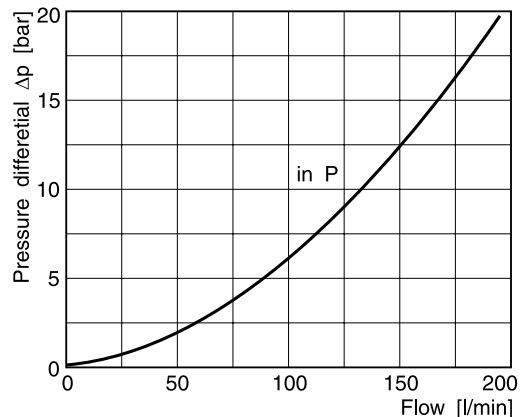
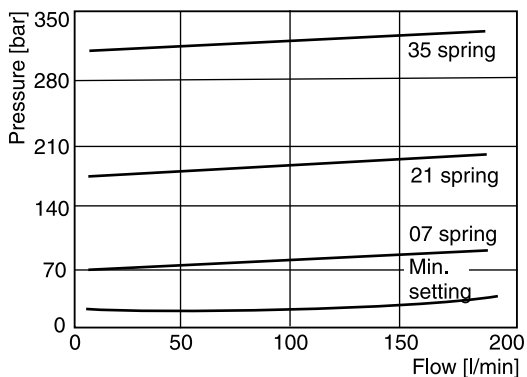


¹⁾ + 31 spring for AT

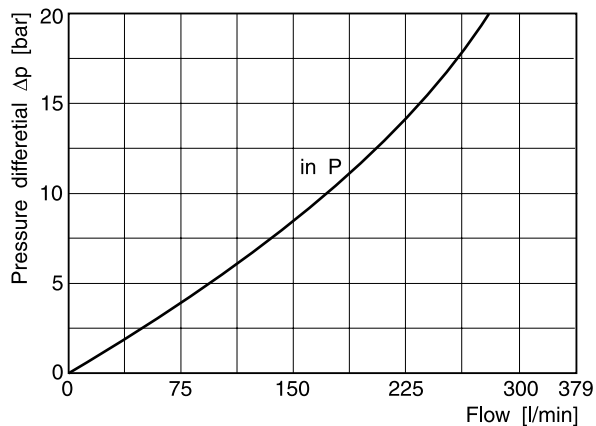
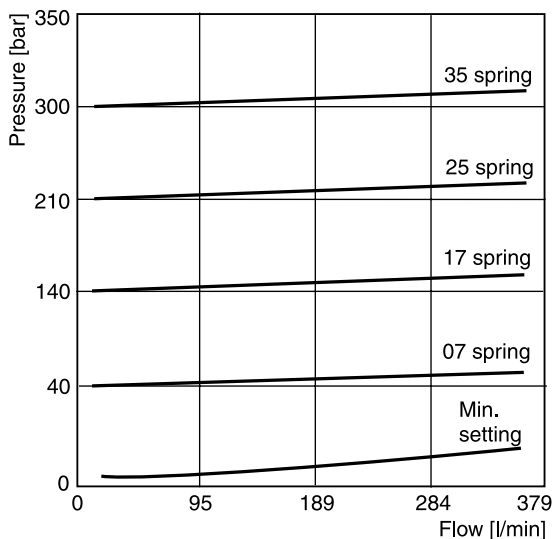
²⁾ + 21 spring for AT

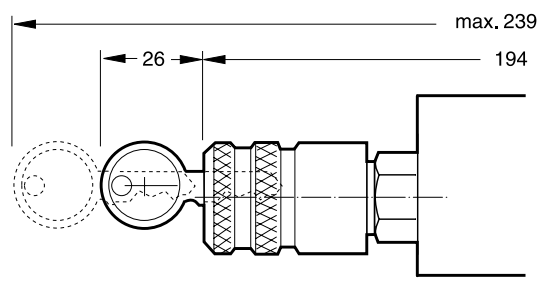
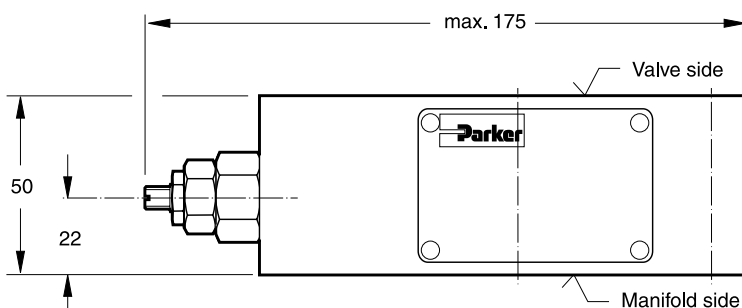


RM4



RM6

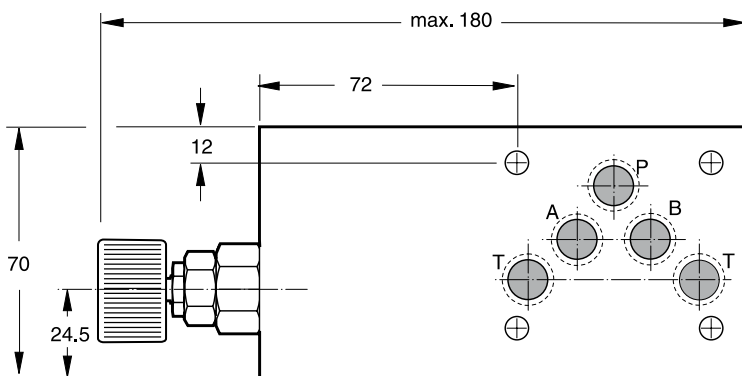
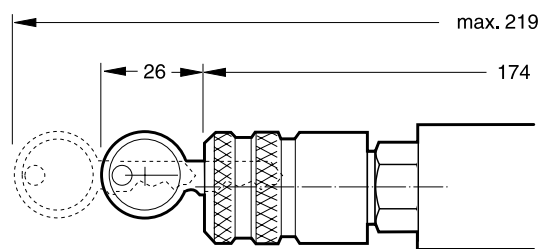
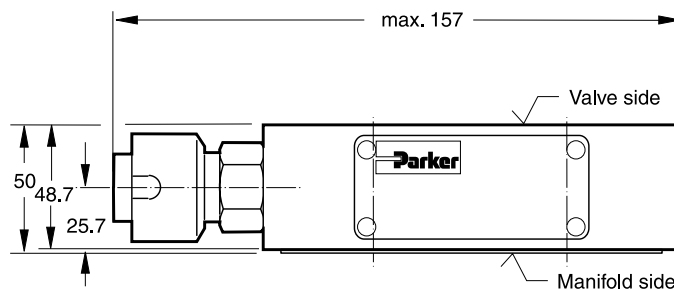
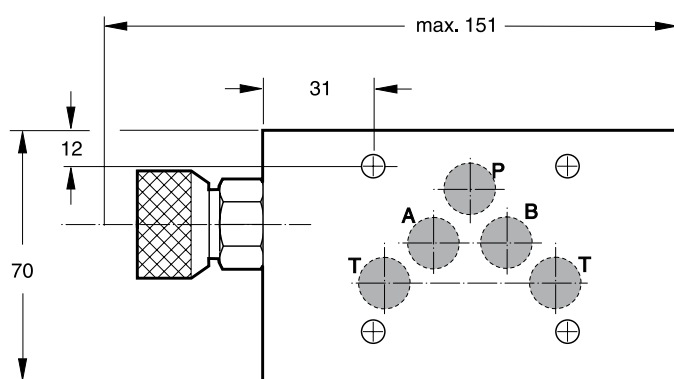


Dimensions**RM3 PT/BT****Adjustment code L****Adjustment code S**

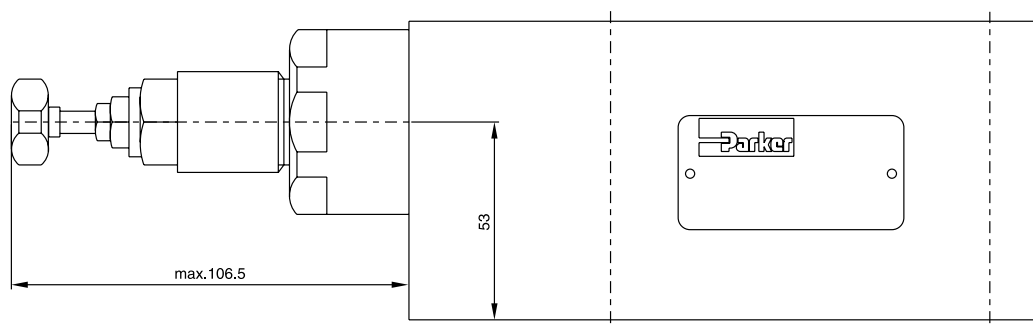
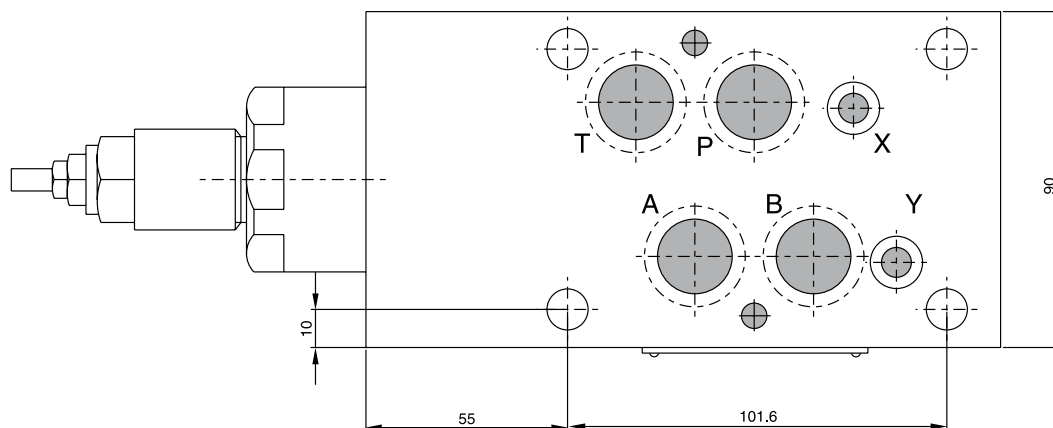
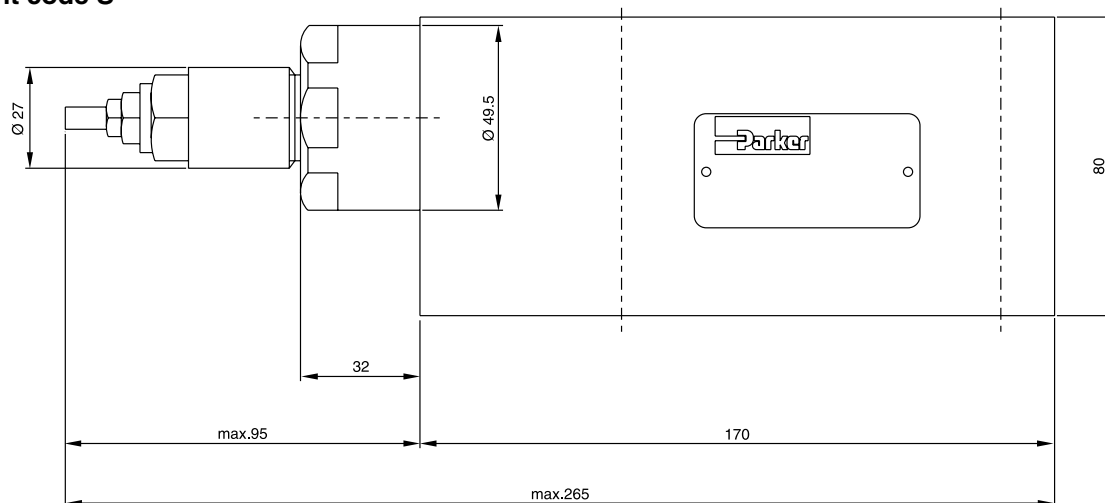
Seal kit RM3	
Seal	Order code
V	SK-RM3-V-11

Note:

The O-rings for sealing the connecting surface of the manifold side are included. The O-rings and the positioning pin are always mounted on the manifold side.

Adjustment code K**RM3 AT*HT****Adjustment code L****Adjustment code S****Adjustment code K****Note:**

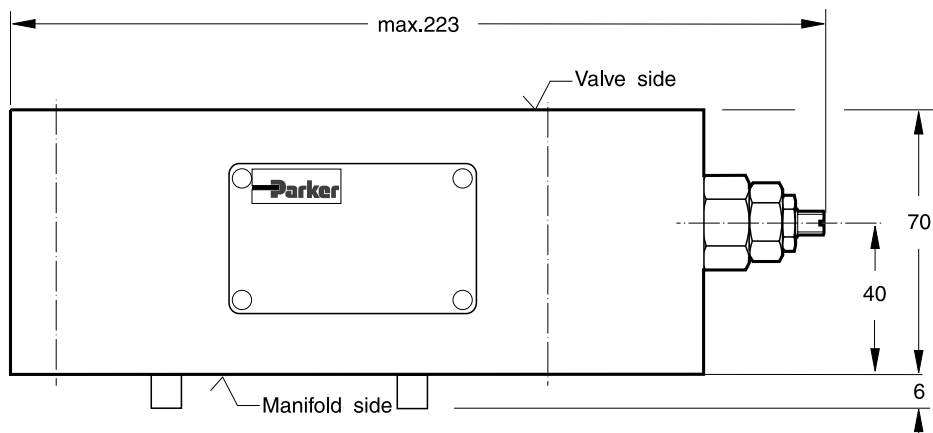
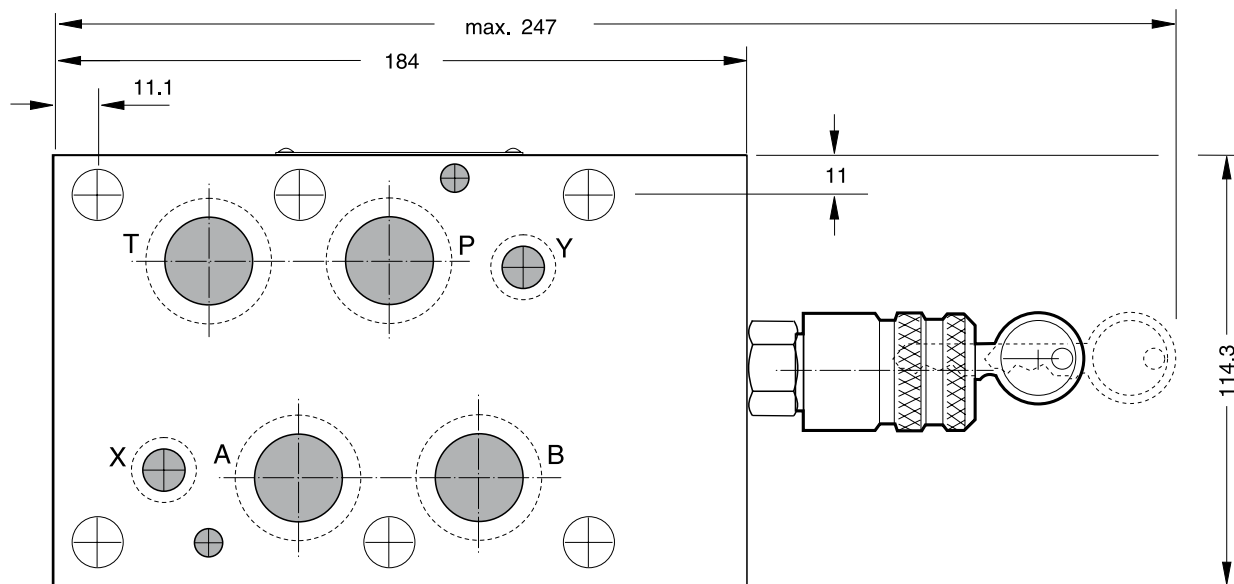
The seal plate and the O-rings for sealing the connecting surface of the manifold side are included with the HT model.

Dimensions**RM4****Adjustment code K****Adjustment code S**

Seal kit RM4	
Seal	Order code
V	SK-RM4-V-10

Note:

The O-rings for sealing the connecting surface of the manifold side are included. The O-rings and the positioning pins are always mounted on the manifold side.

Dimensions**RM6****Adjustment Code S****Adjustment Code L**

Seal kit RM6	
Seal	Order code
V	SK-RM6-V-11

Note:

The O-rings for sealing the connecting surface of the manifold side are included. The O-rings and the positioning pins are always mounted on the manifold side.