

Preparation of compressed air ► Supplementary products

3/2-shut-off valve, mechanically operated, Series NL4-BAV

► G 1/2 - G 3/4



00106897

Version

Ball valve
for padlocks

lockable

Working pressure min./max.

0 bar / 16 bar

Medium

Compressed air

Neutral gases

Medium temperature min./max.

-10 °C / +60 °C

Ambient temperature min./max.

-10 °C / +60 °C

Actuating element

rotary switch

Sealing principle

metal/metal sealing

Materials:

Die cast zinc

Housing

Acrylonitrile butadiene styrene

Front plate

Acrylonitrile Butadiene Rubber

Seals

Polyoxymethylene

Actuating element

Technical Remarks

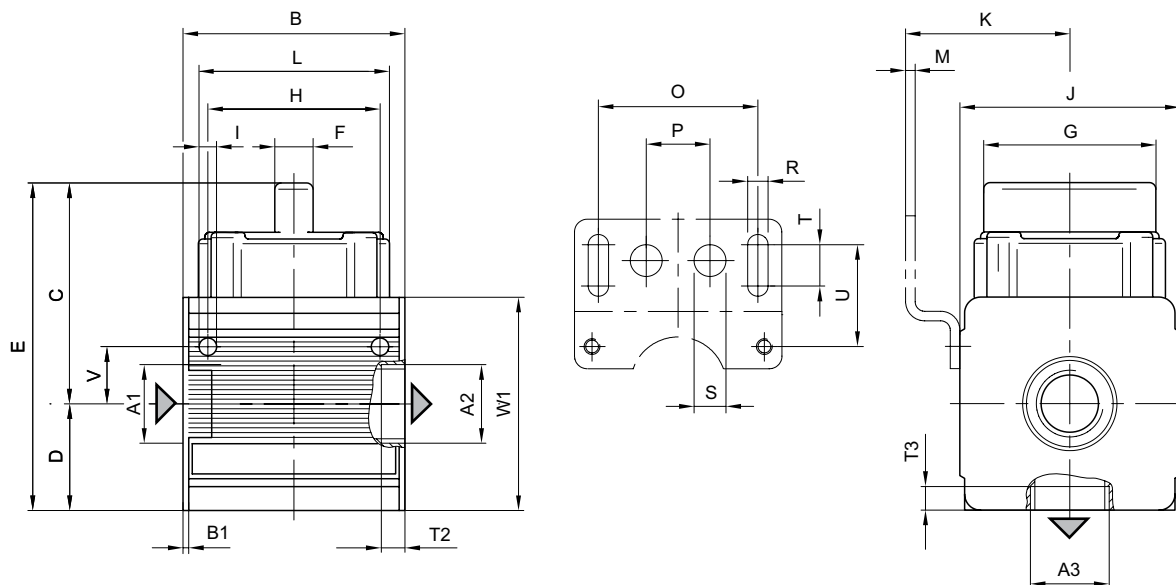
- The pressure dew point must be at least 15 °C under ambient and medium temperature and may not exceed 3 °C.

	Port	Exhaust	Qn		Weight	Part No.
			1 ► 2	2 ► 3		
			[l/min]		[kg]	
	G 1/2					0821300911
	G 3/4	G 1/2	11000	110	0.82	0821300913
Nominal flow Qn with secondary pressure 6 bar at $\Delta p = 1$ bar						

3/2-shut-off valve, mechanically operated, Series NL4-BAV

► G 1/2 - G 3/4

Dimensions



A1 = input
A2 = output
A3 = ventilation port

00108170

A1	A2	A3	B	B1	C	D	E	F	H	G	I	J	K
G 1/2	G 1/2	G 1/2	69.6	1.8	69.5	33.5	103	12	54	60	5.5	69	54.5
G 3/4	G 3/4	G 1/2	69.6	1.8	69.5	33.5	103	12	54	60	5.5	69	54.5

A1	L	M	O	P	R	S	T	T2	T3	U	V	W1
G 1/2	60	3	38	20	6.4	10	13	10.5	10.5	33	18	67
G 3/4	60	3	50	20	6.4	10	13	10.5	10.5	33	18	67