

Preparation of compressed air ► Maintenance units and components

3/2-shut-off valve, mechanically operated, Series AS3-BAV

► G 3/8 - G 1/2 ► suitable for ATEX



00127429

ATEX
Version

Working pressure min./max.
Medium

Medium temperature min./max.
Ambient temperature min./max.

Actuating element
Sealing principle
Max. particle size

Materials:

Housing
Front plate
Seals
Threaded bushing
Actuating element
Locking base

II 2G2D T4 X

Ball valve, Can be assembled into blocks
for padlocks

lockable

0 bar / 16 bar

Compressed air

Neutral gases

-10 °C / +50 °C

-10 °C / +50 °C

rotary switch

metal/metal sealing

25 µm

Polyamide

Acrylonitrile butadiene styrene

Polytetrafluorethylene

Die cast zinc

Polyoxymethylene

Die cast zinc

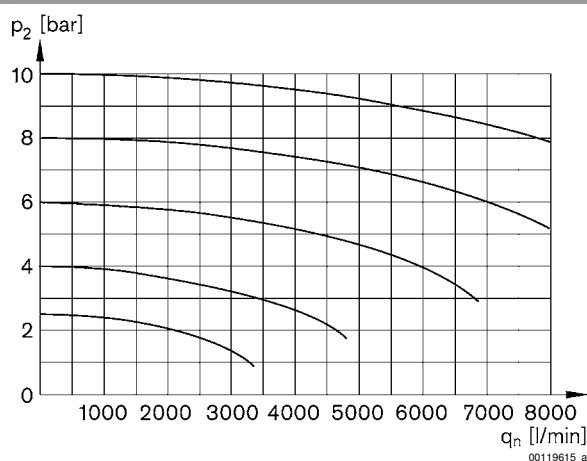
Technical Remarks

- The pressure dew point must be at least 15 °C under ambient and medium temperature and may not exceed 3 °C.

	Port	Exhaust	Qn		Weight	Part No.
			1►2	2►3		
			[l/min]		[kg]	
	G 3/8					R412007260
	G 1/2	G 1/2	4500	3200	0.446	R412007261

Nominal flow Qn at p1 = 6.3 bar and Δp = 1 bar

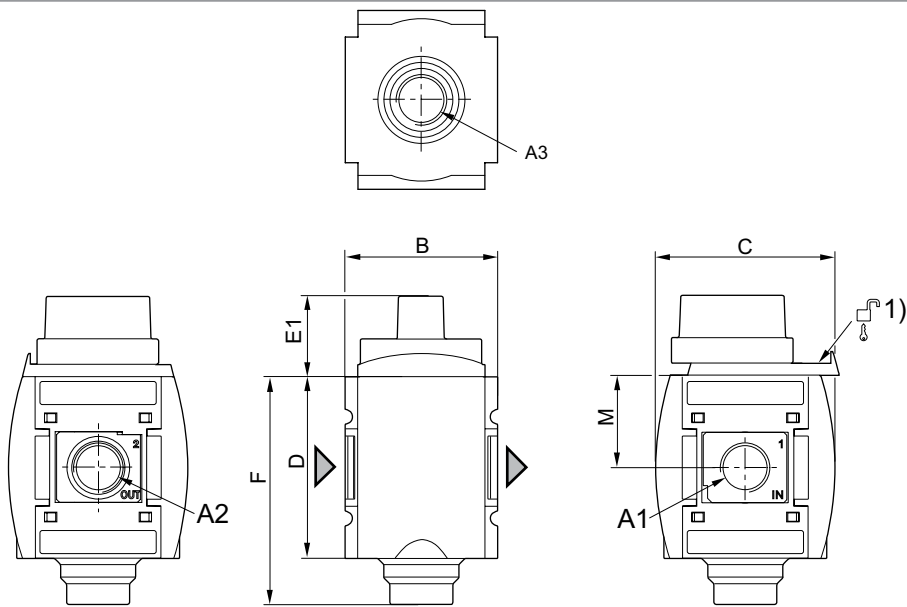
Flow rate characteristic



p2 = secondary pressure
qn = nominal flow

3/2-shut-off valve, mechanically operated, Series AS3-BAV
 ▶ G 3/8 - G 1/2 ▶ suitable for ATEX

Dimensions



A1 = input
A2 = output
A3 = ventilation port
1) Mounting option for padlocks; max. shackle Ø 8

A1	A2	A3	B	C	D	E1	F	M					
G 3/8	G 3/8	G 1/2	63	74	80	28	99	42.5					
G 1/2	G 1/2	G 1/2	63	74	80	28	99	42.5					