

Characteristics

The pilot operated pressure relief valves from the Parker Manapak series PRM are in sandwich design for easy configuration of stack systems. The reducing function is located in port P except for size NG10 (PRM3 AA and BB, see ordering code).

The pressure reduction for the desired connecting port is achieved by internal connections of the pilot and drain lines with the corresponding channels.

Features

- The valve bodies of the Parker Manapak valve series PRM are made of steel.
- The control pressure range can be set by slotted head screw, knob, or knob with Key lock.
- Pressure gauge/measuring connections are available in the valve body.
- Piloting results in a flat p/Q performance curve.
- PRM3 - NG10 (CETOP 5)
PRM4 - NG16 (CETOP 7)
PRM6 - NG25 (CETOP 8)

Technical data

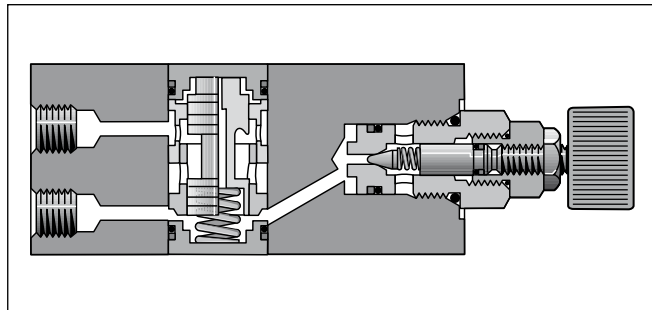
Port size		NG10	NG16	NG25
Mounting pattern		ISO 4401		
Series		PRM3	PRM4	PRM6
Max. operating pressure	[bar]	350	350	250
Pressure reduction in channel		P, A, B	P	P, A
Weight	[kg]	2.7	5.0	5.6

**Pilot Operated Pressure Reducing Valve
Series PRM**

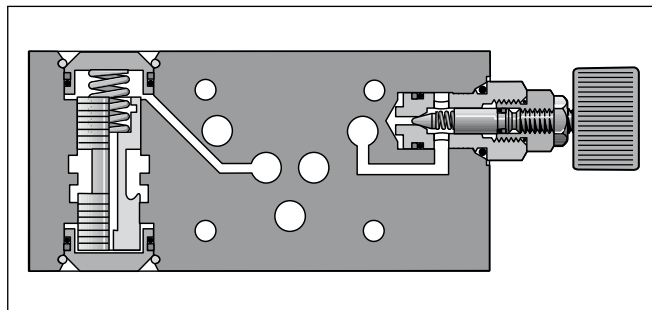
PRM3PP



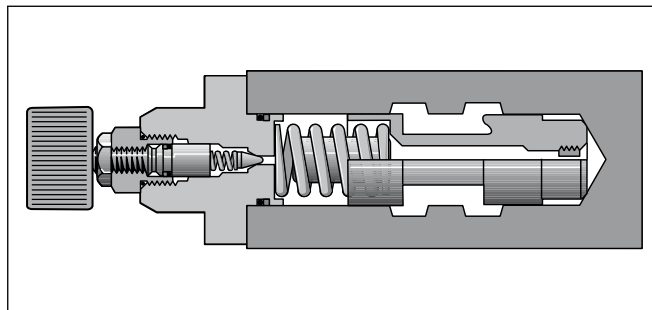
PRM6



PRM3PP

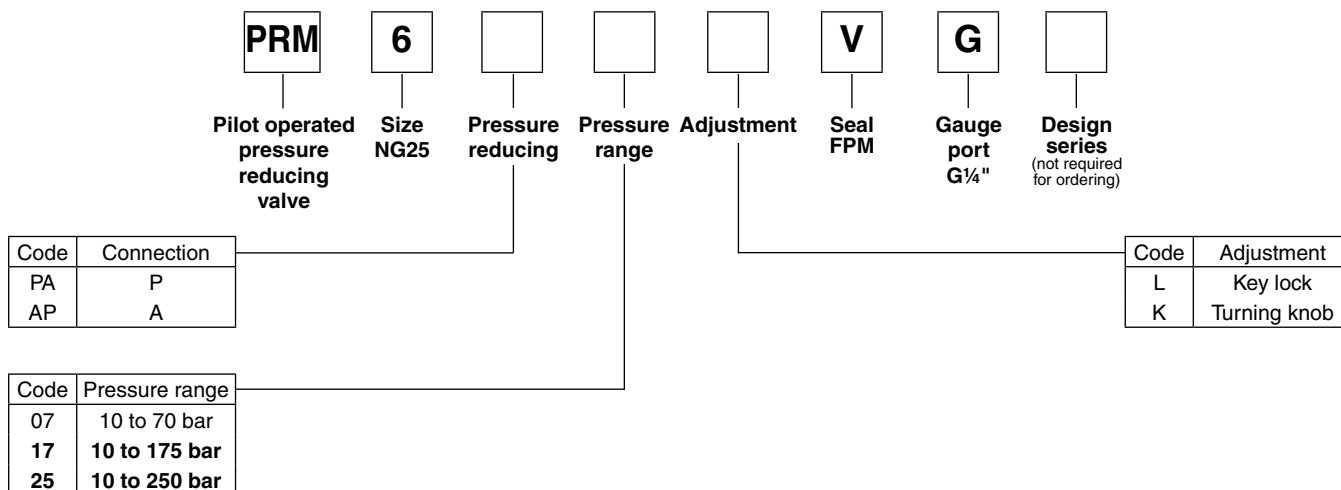
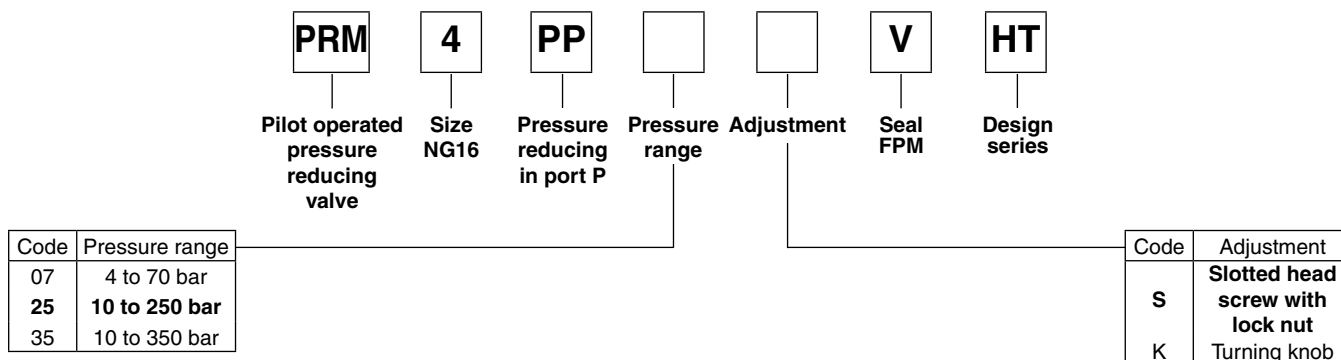
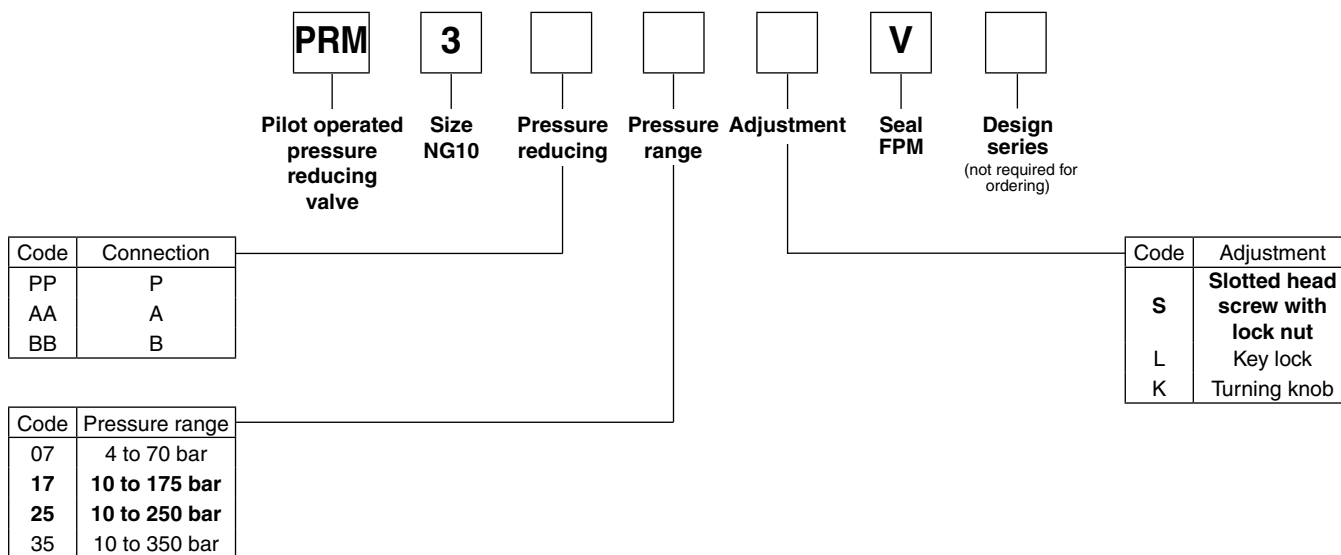


PRM3AA or PRM3BB



PRM4 and PRM6

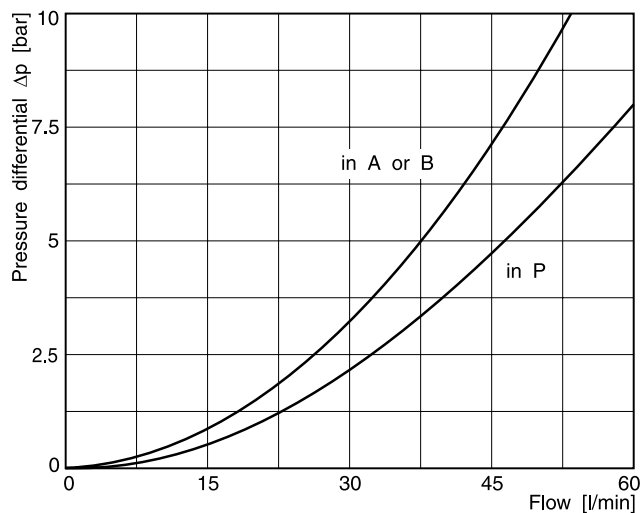
Ordering Code



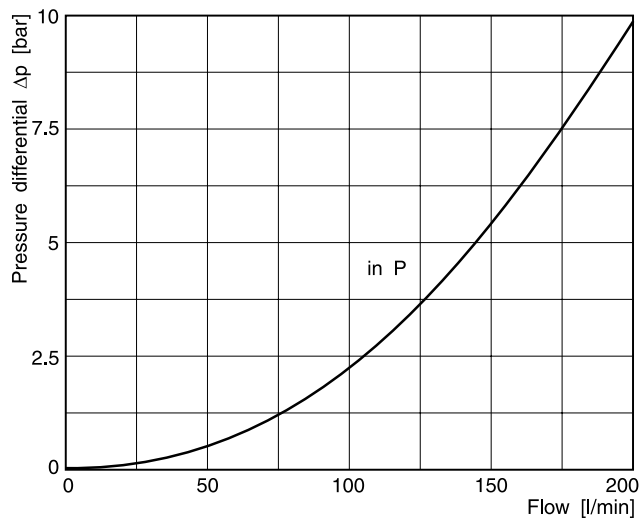
Bold letters =
Short-term availability

$\Delta p/Q$ performance curves

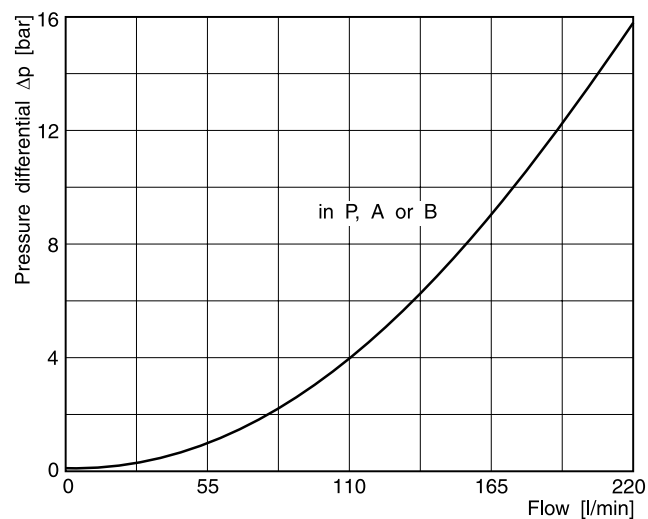
PRM3



PRM4

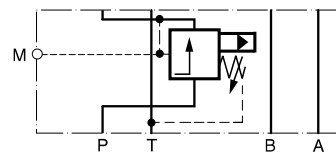


PRM6

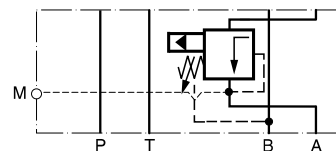


Schematics

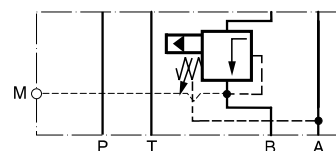
PRM3PP



PRM3AA

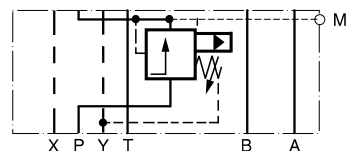


PRM3BB

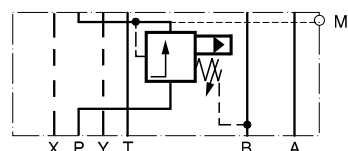


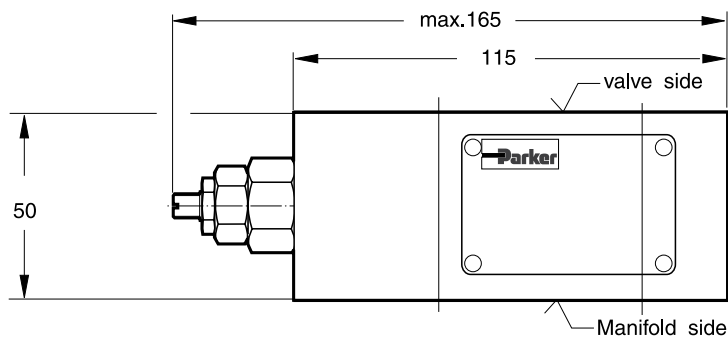
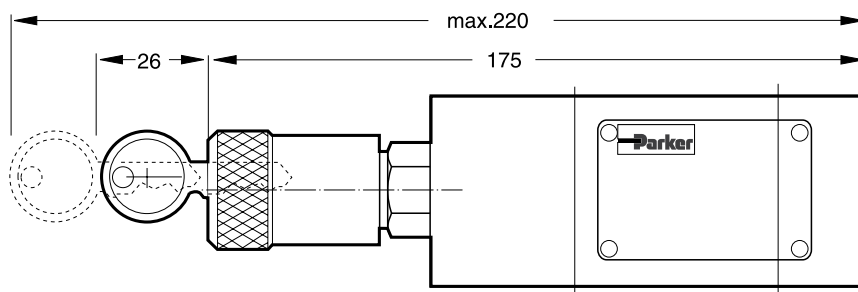
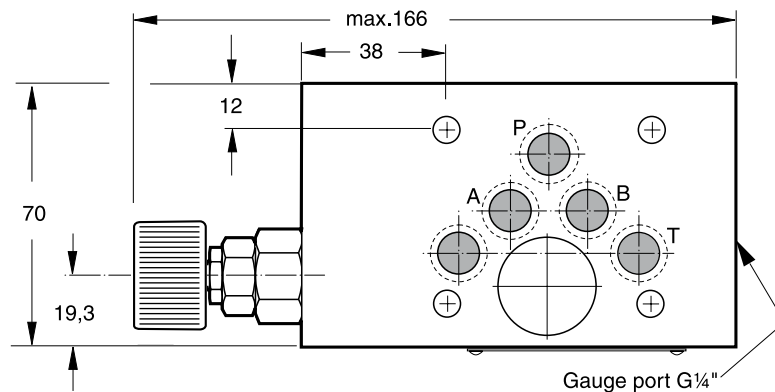
PRM4PP

PRM6PA



PRM6AP

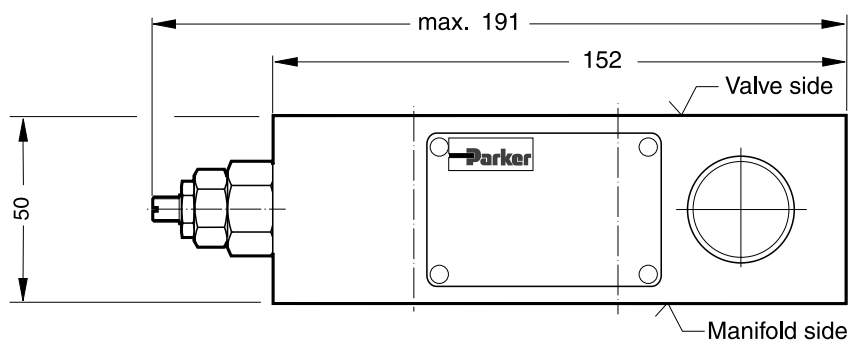
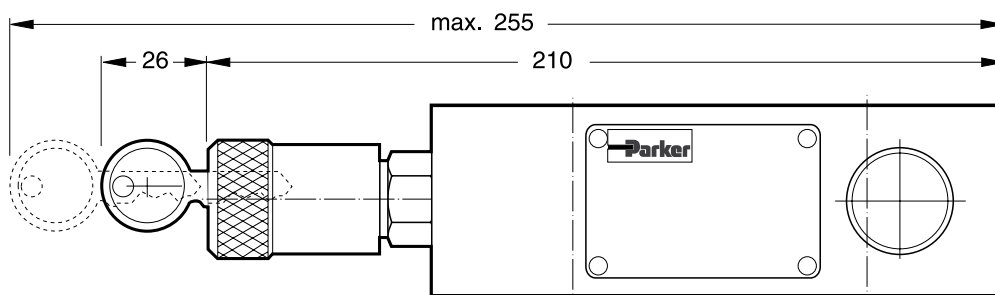
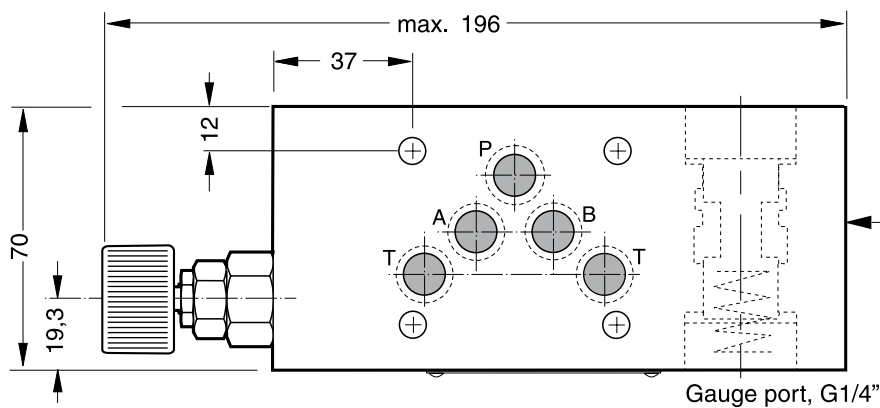


Dimensions**PRM3PP****Adjustment code S****Adjustment code L****Adjustment code K**

Seal kit PRM3PP	
Seal	Order code
V	SK-PRM3-V-30

Note:

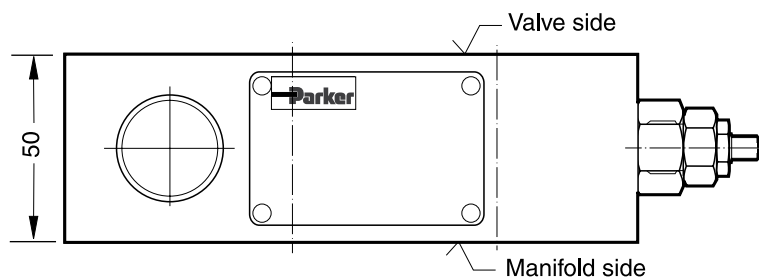
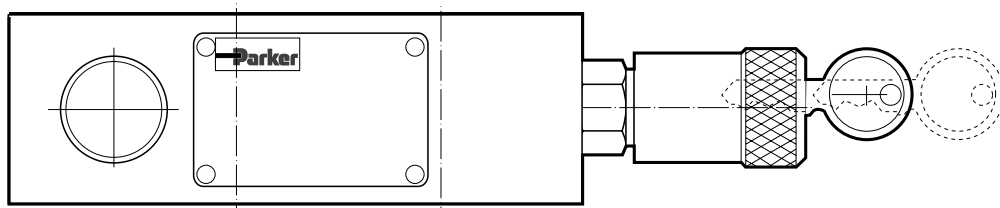
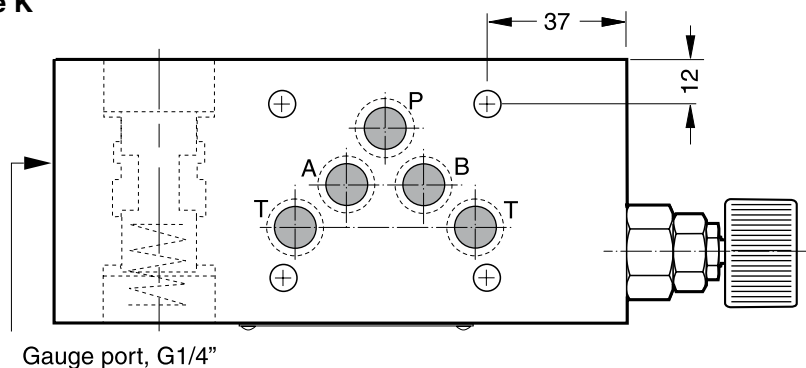
The O-rings for sealing the connecting surface of the manifold side are included. The O-rings and the positioning pins are always mounted on the manifold side.

PRM3AA**Adjustment code S****Adjustment code L****Adjustment code K**

Seal kit PRM3AA	
Seal	Order code
V	SK-PRM3-V-11

Note:

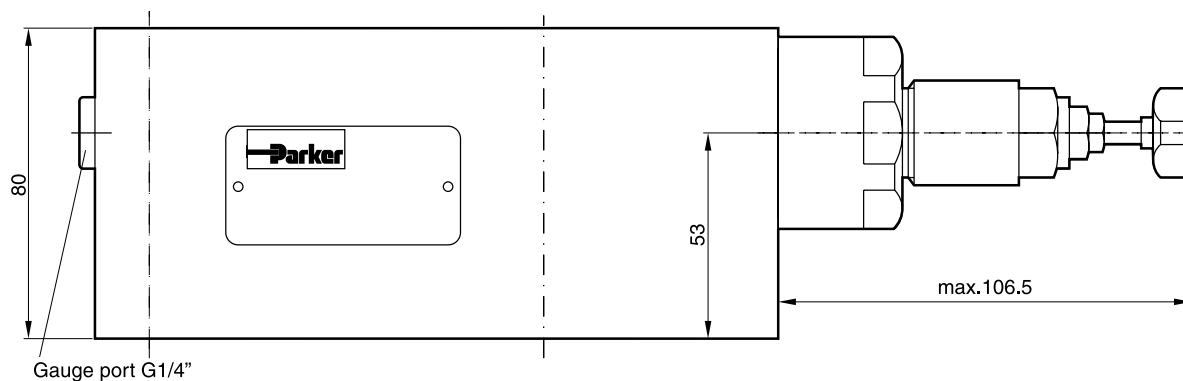
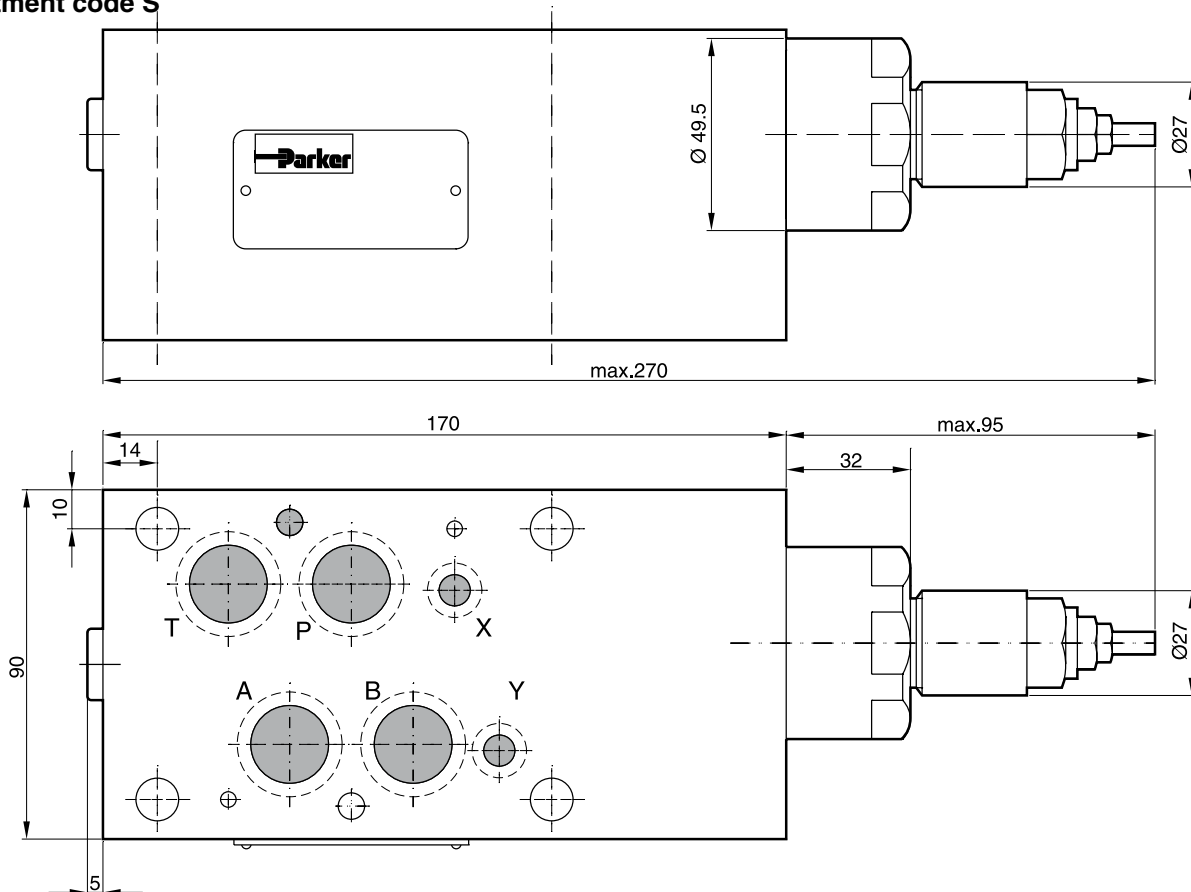
The O-rings for sealing the connecting surface of the manifold side are included. The O-rings and the positioning pins are always mounted on the manifold side.

Dimensions**PRM3BB****Adjustment code S****Adjustment code L****Adjustment code K**

Seal kit PRM3BB	
Seal	Order code
V	SK-PRM3-V-11

Note:

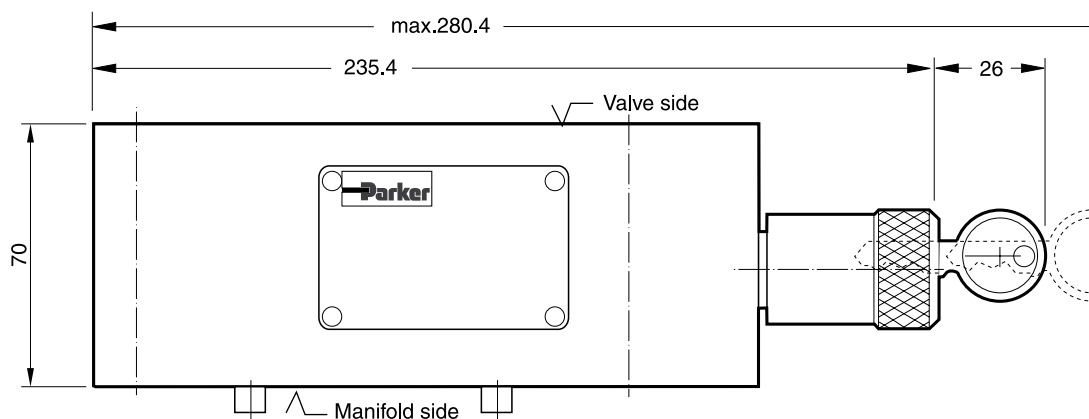
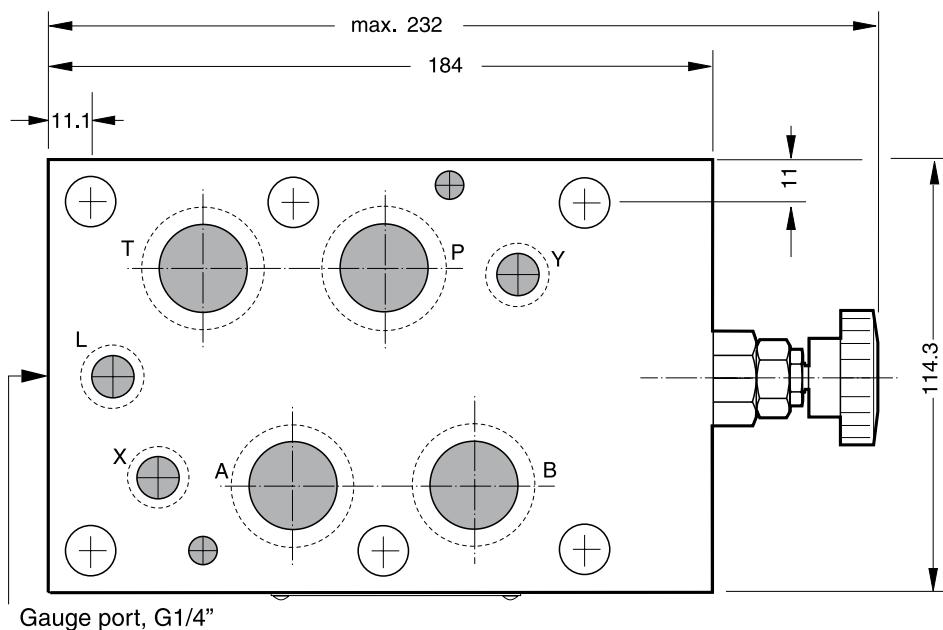
The O-rings for sealing the connecting surface of the manifold side are included. The O-rings and the positioning pins are always mounted on the manifold side.

PRM4PP**Adjustment code K****Adjustment code S**

Seal kit PRM4	
Seal	Order code
V	SK-PRM4-V-10

Note:

The O-rings for sealing the connecting surface of the manifold side are included. The O-rings and the positioning pins are always mounted on the manifold side.

Dimensions**PRM6****Adjustment code L****Adjustment code K**

Seal kit PRM6	
Seal	Order code
V	SK-PRM6-V-25

Note:

The O-rings for sealing the connecting surface of the manifold side are included. The O-rings and the positioning pins are always mounted on the manifold side.