

Preparation of compressed air ► Maintenance units and components

3/2-shut-off valve, mechanically operated, Series AS1-BAV

► G 1/4 ► Air supply: left



00137244

Version

Working pressure min./max.
Medium

Medium temperature min./max.
Ambient temperature min./max.
Actuating element
Max. particle size

Materials:

Housing
Front plate
Seals
Actuating element

Ball valve, Can be assembled into blocks for padlocks
lockable
0 bar / 12 bar
Compressed air
Neutral gases
-10 °C / +50 °C
-10 °C / +50 °C
rotary switch
25 µm

Polyamide
Acrylonitrile butadiene styrene
Acrylonitrile Butadiene Rubber
Polyoxymethylene

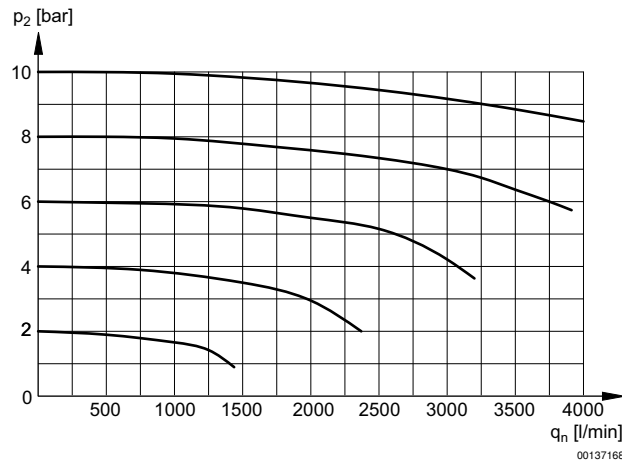
Technical Remarks

- The pressure dew point must be at least 15 °C under ambient and medium temperature and may not exceed 3 °C.

	Port	Exhaust	Qn		Weight	Part No.
			1 ► 2	2 ► 3		
			[l/min]		[kg]	
	G 1/4	G 1/4	2600	380	0.15	R412014664

Nominal flow Qn at p1 = 6.3 bar and Δp = 1 bar

Flow rate characteristic

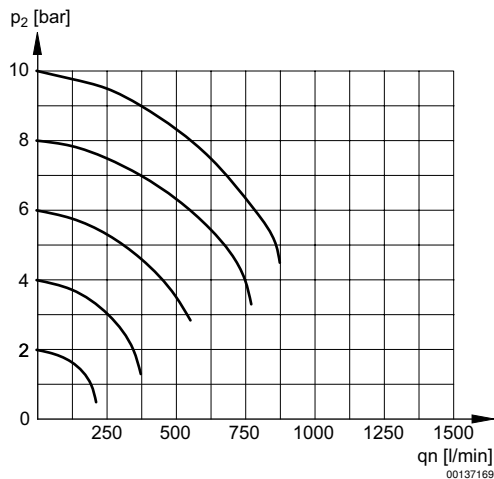


p2 = secondary pressure
qn = nominal flow

3/2-shut-off valve, mechanically operated, Series AS1-BAV

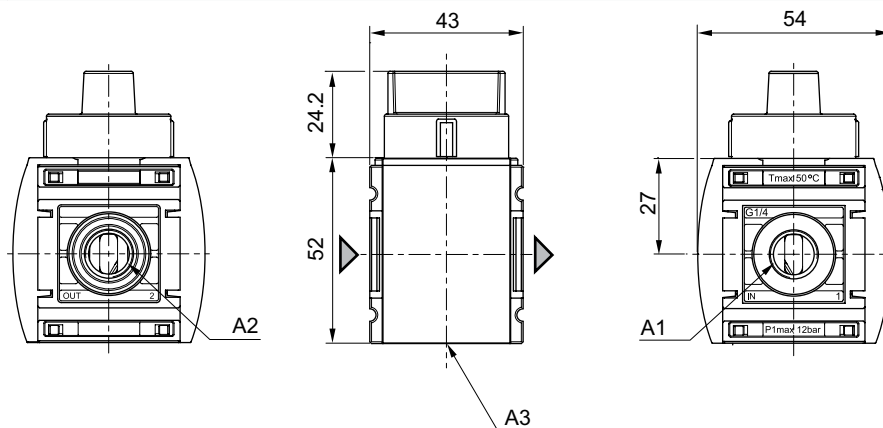
► G 1/4 ► Air supply: left

Rear exhaust



p2 = secondary pressure
qn = nominal flow

Dimensions



A1 = input
A2 = output
A3 = ventilation port