

Preparation of compressed air ► Supplementary products

3/2-shut-off valve, mechanically operated, Series NL2-BAV

► G 1/4 - G 3/8



00106897

Version

Ball valve
for padlocks
lockable
0 bar / 16 bar
Compressed air
Neutral gases
-10 °C / +60 °C
-10 °C / +60 °C
rotary switch
metal/metal sealing

Working pressure min./max.
Medium

Medium temperature min./max.

Ambient temperature min./max.

Actuating element

Sealing principle

Materials:

Housing

Front plate

Seals

Actuating element

Die cast zinc

Acrylonitrile butadiene styrene

Acrylonitrile Butadiene Rubber

Polyoxymethylene

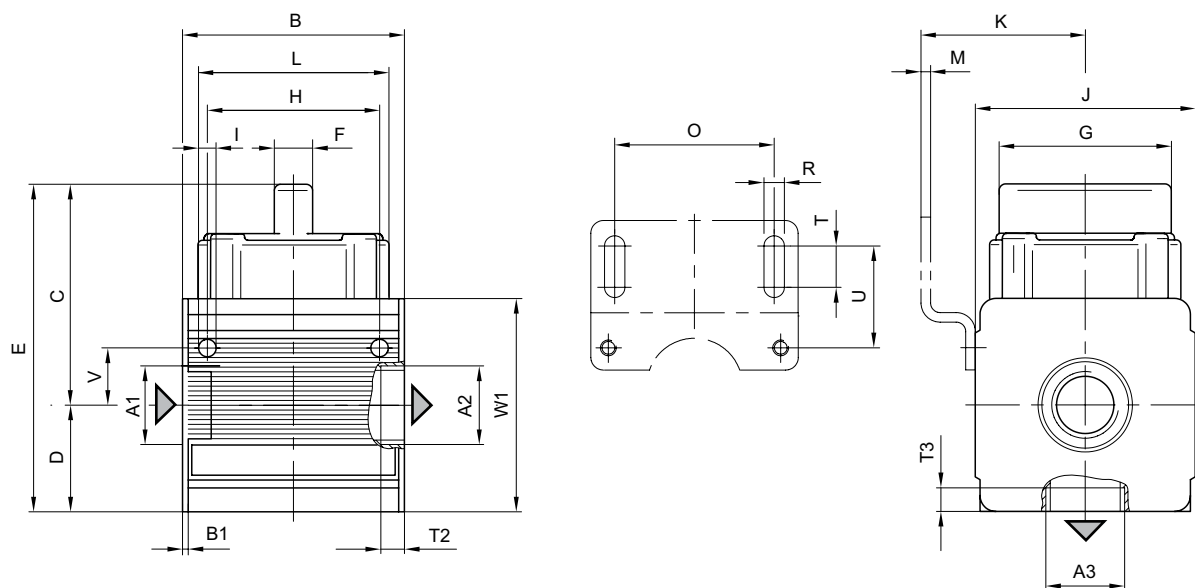
Technical Remarks

- The pressure dew point must be at least 15 °C under ambient and medium temperature and may not exceed 3 °C.

	Port	Exhaust	Qn			Weight	Part No.
			1►2	2►3	[l/min]		
						[kg]	
	G 1/4						0821300901
	G 3/8	G 1/4	3000	2800	70	0.36	0821300903

Nominal flow Qn with secondary pressure 6 bar at $\Delta p = 1$ bar

Dimensions



A3 = ventilation port

00107304

Supplementary products

Part numbers marked in bold are available from the central warehouse in Germany, see the shopping basket for more detailed information

Pneumatics catalog, online PDF, as of 2015-03-02, ©AVENTICS S.a.r.l., subject to change

3/2-shut-off valve, mechanically operated, Series NL2-BAV

► G 1/4 - G 3/8

A1	A2	A3	B	B1	C	D	E	F	G	H	I	J	K
G 1/4	G 1/4	G 1/4	48	1.5	54.5	26	80.5	8	33.5	36	4.4	47	43
G 3/8	G 3/8	G 1/4	48	1.5	54.5	26	80.5	8	33.5	36	4.4	47	43

A1	L	M	O	R	T	T2	T3	U	V	W1			
G 1/4	40.5	3	38	5.4	8	8	8	27.5	12.3	52			
G 3/8	40.5	3	38	5.4	8	7.5	8	27.5	12.3	52			