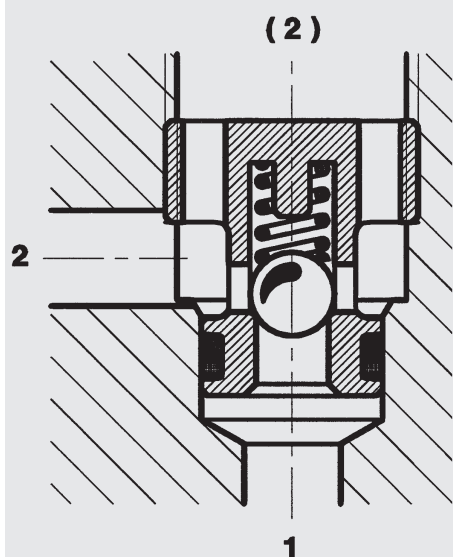


## FUNCTION



## Check Valve Direct-Acting Cartridge – 350 bar RVE-G 1/8 to 1/2

### FEATURES

- Check valves for mounting directly into control blocks
- Both axial and radial flow direction
- Choice of four sizes for optimum adaptability to the system
- Leakage-free poppet design for complete shut-off
- Cracking pressures other than 0.5 bar are available as an option

### SPECIFICATIONS

Operating pressure:	max. 350 bar
Nominal flow:	RVE-G1/8 to max. 10 l/min RVE-G1/4 to max. 10 l/min RVE-G3/8 to max. 30 l/min RVE-G1/2 to max. 60 l/min
Media operating temperature range:	min. -20 °C to max. +120 °C
Ambient temperature range:	min. -20 °C to max. +120 °C
Operating fluid:	Hydraulic oil to DIN 51524 Part 1 and 2
Viscosity range:	min. 2.8 mm <sup>2</sup> /s to max. 800 mm <sup>2</sup> /s
Filtration:	Class 21/19/16 according to ISO 4406 or cleaner
MTTF <sub>d</sub> :	150 years (see "Conditions and instructions for valves" in brochure 5.300)
Installation:	No orientation restrictions
Materials:	Valve body: steel Seals: FKM
Cavity:	04020, 04220, 06320, 08220
Weight:	RVE-G1/8 = 0.003 kg RVE-G1/4 = 0.005 kg RVE-G3/8 = 0.010 kg RVE-G1/2 = 0.024 kg

The RVE is a check valve which allows flow in one direction (port 1 → 2) and shuts off flow in the other direction. The design is a spring-loaded ball with a standard cracking pressure of 0.5 bar.

## MODEL CODE

**RVE - G1/2 - X - 0.5**

### Basic model

Check valve

### Size of connection

G1/8 = RVE-G1/8

G1/4 = RVE-G1/4

G3/8 = RVE-G3/8

G1/2 = RVE-G1/2

### Series

(determined by manufacturer)

### Cracking pressure

0.5 = 0.5 bar

Others on request

## Standard models

Model code	Part No.
RVE-G1/8-X-0.5	710150
RVE-G1/4-X-0.5	710151
RVE-G3/8-X-0.5	710152
RVE-G1/2-X-0.5	710153

Other models on request

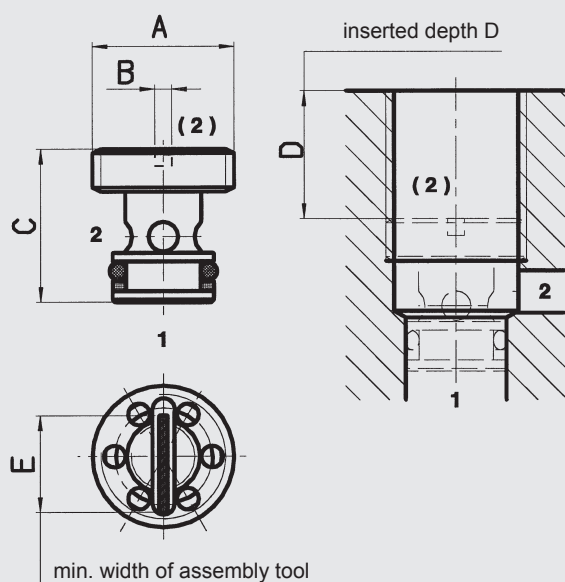
## Standard in-line bodies

On request

## Seal kits

Code	Part No.
Sealkit RVE(S.)-...-Viton	480083

## DIMENSIONS



Valves must be screwed in to the inserted depth D (see below) and secured appropriately. Securing by closing screw or calk thread!  
If screwed in too far, leaks may occur!

Description	A	B	C	D	E
RVE-G1/8-X	G 1/8	1.5	13	10	7
RVE-G1/4-X	G 1/4	1.5	13	14.5	8.5
RVE-G3/8-X	G 3/8	2	18	15	13.5
RVE-G1/2-X	G 1/2	2	23	17	12

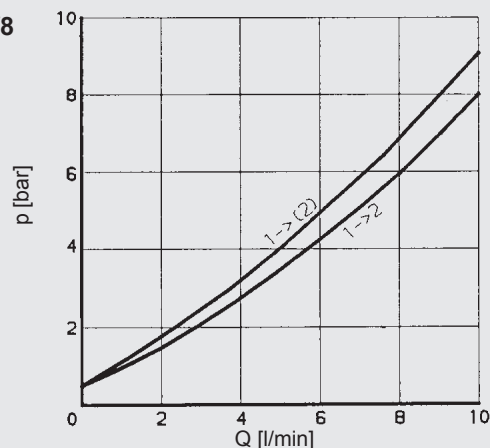
## PERFORMANCE

### Pressure drops, dependent on flow rate

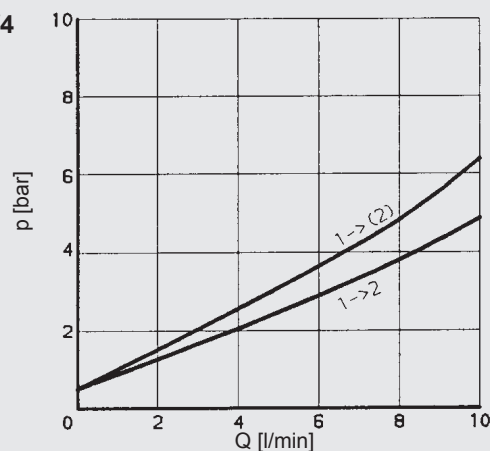
Measured at  $\dot{V} = 34 \text{ mm}^2/\text{s}$

and  $T_{\text{oil}} = 46^\circ\text{C}$

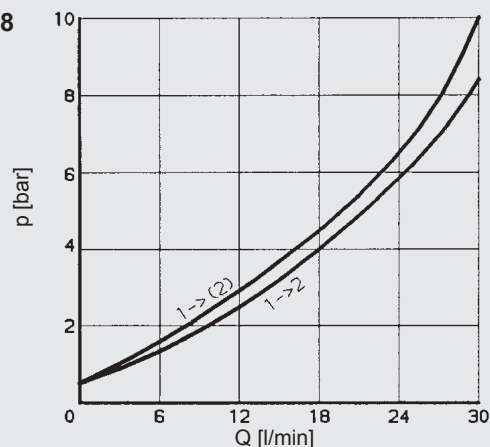
### RVE - G1/8



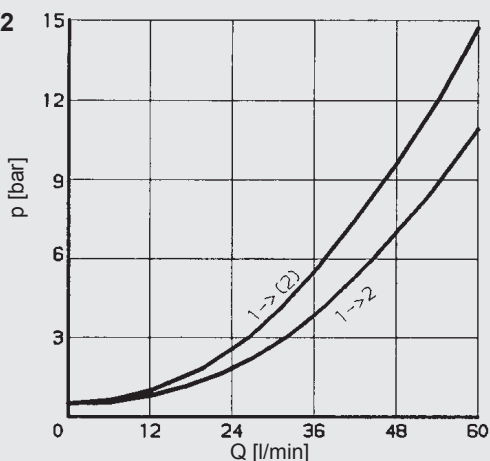
### RVE - G1/4



### RVE - G3/8

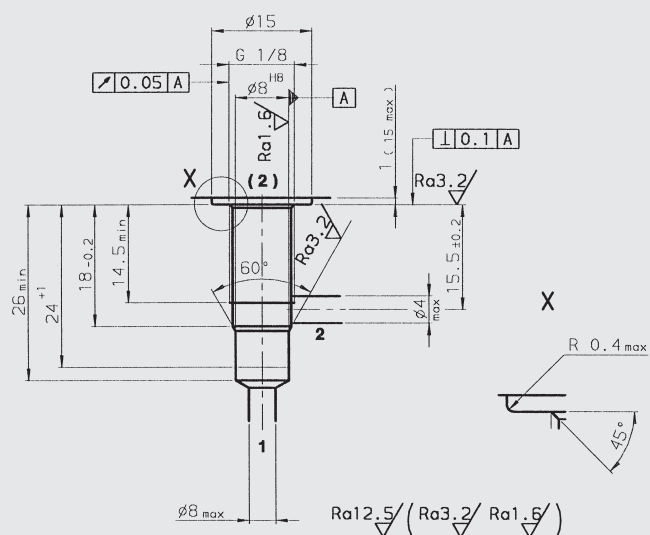


### RVE - G1/2



## CAVITY

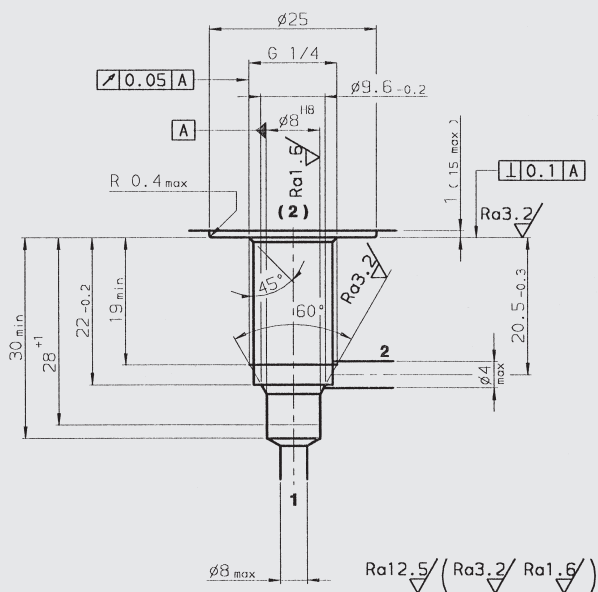
04020 (RVE-G1/8)



Millimeter  
Subject to technical modifications

## CAVITY

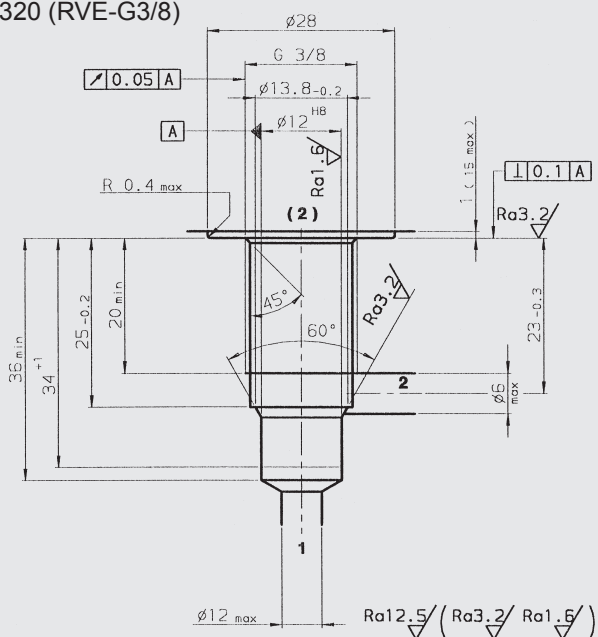
04220 (RVE-G1/4)



Millimeter  
Subject to technical modifications

## CAVITY

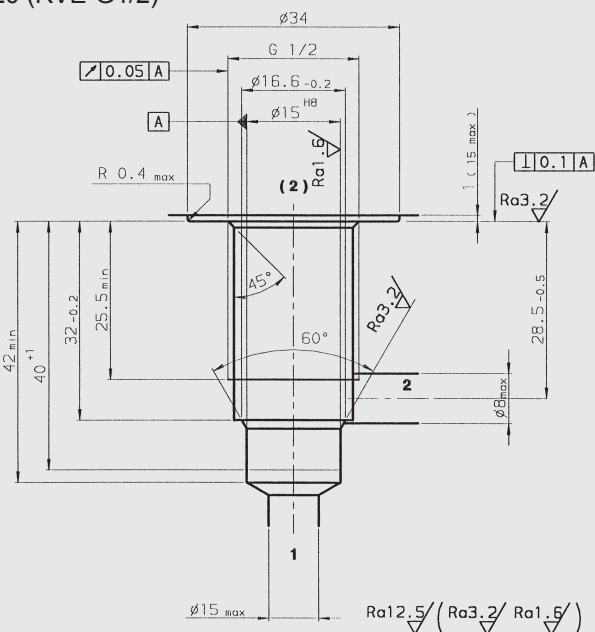
06320 (RVE-G3/8)



Millimeter  
Subject to technical modifications

## CAVITY

08220 (RVE-G1/2)



Millimeter  
Subject to technical modifications

## Form tools

Tool	Part No./Cavity			
	04020	04220	06320	08220
Countersink MK1	169549	169563	169550	158735
Reamer MK1	1000747	1000747	1014203	1000768
Tap	1002671	1002670	1002668	1002667
Plug gauge	174850	172742	172826	158736

## NOTE

The information in this brochure relates to the operating conditions and applications described.  
For applications or operating conditions not described, please contact the relevant technical department.  
Subject to technical modifications.

**HYDAC Fluidtechnik GmbH**  
Justus-von-Liebig-Str.  
D-66280 Sulzbach/Saar  
Tel: 0 68 97 / 509-01  
Fax: 0 68 97 / 509-598  
E-Mail: flute@hydac.com

