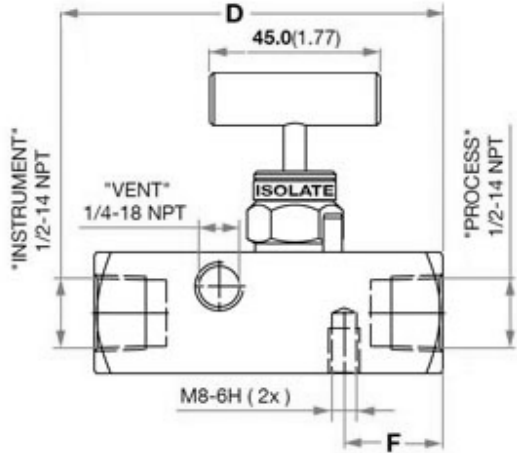
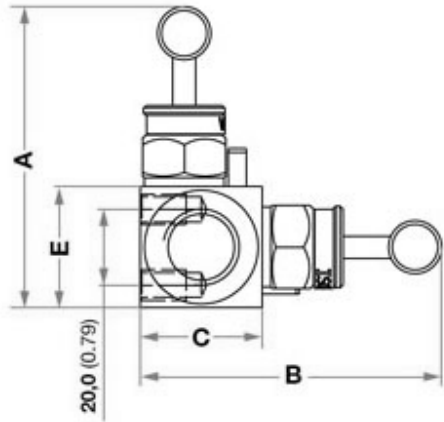


Product Code:	M20M108NSSTT
Bonnet Type:	Packing Bonnet
Connection Type:	Female NPT Thread
Connection Size:	1/2"
Body Material:	Stainless Steel
Mounting:	Remote
Vent:	1/4" Female NPT
Product Name:	2 Way Remote Mount Manifold
Addition to Product Code:	M20M108NSS
Max Temperature:	430°F (221°C)
Max Pressure:	5800 psi (400 bar)
Min Temperature:	-58°F (-50°C)
Model:	1500005
UNSPCS:	41104019



Param	inch	mm
A	3.11	79
B	3.11	79
C	1.26	32
D	3.62	92
E	1.26	32
F	1.02	26

THIS DRAWING AND INFORMATION INCLUDED, ARE CONFIDENTIAL PROPERTY OF HAM-LET LTD AND ARE LOANED TO YOU FOR A LIMITED PURPOSE. NEITHER TO BE COPIED EXHIBITED OR FURNISHED TO OTHERS IN ANY FORM WITHOUT THE WRITTEN CONSENT OF HAM-LET LTD.

<div> <div></div> <div> HAM-LET GROUP LTD info@ham-let.com </div> </div>	
Part No. M20M108NSSTT	Catalog Number N/A
SS 316L Remote Mount 2 Way Manifold, 1/2" Female NPT Thread	