



NUMERHYD

MULTI-STATION MANIFOLD CETOP 5

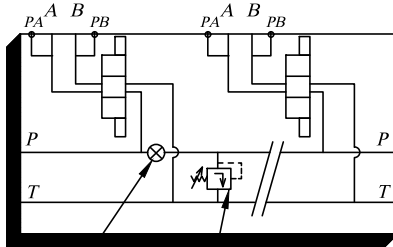
S5L

A21/2

SIDE EXIT

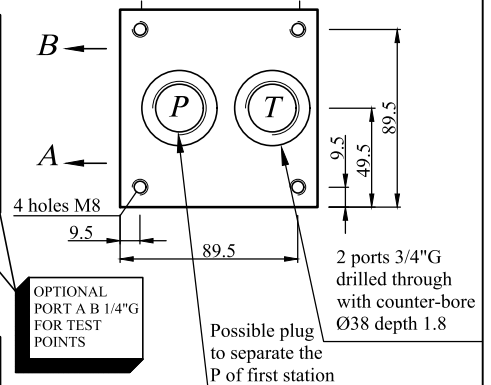
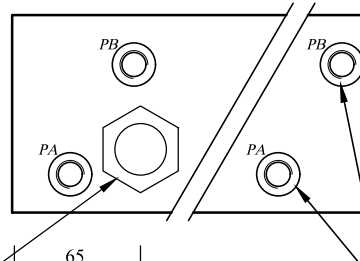
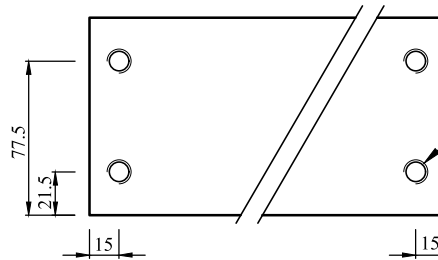
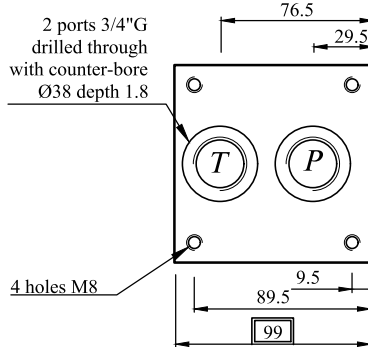
- Sorties latérales
- Seitlich

- Service pressure 700bar for steel - 250bar for Aluminium alloy.
- Possibility to connect with a special manifold.
- Possibility to connect with several block S3 or S5.



Cavity C16.2 optional

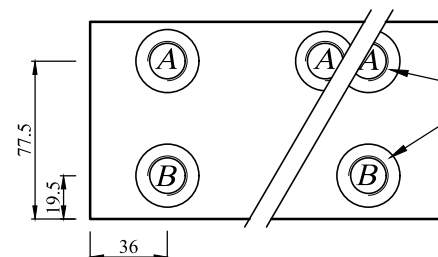
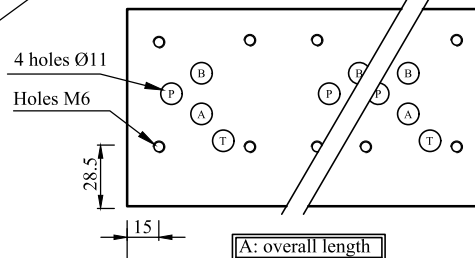
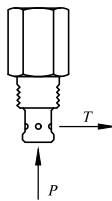
Tapped hole 3/4"G for possible plug (plug out of supply)



* OPTIONAL CAVITY FOR VALVE C16.2 COMPONENT FOR EXAMPLE : (OUT OF SUPPLY)

- * HYDRAFORCE VC16.2 RV16-26
- * EATON C16.2 RV5-16
- * PARKER C16.2 RAH16-1
- * HYDAC FC16.2 DB16P
- ETC...

* AND ALSO :
DIRECTIONAL VALVE
RESTRICTOR
CHECK VALVE



DIMENSIONS

MODEL	A	weight (kg)	
		STEEL	ALU
S5L1G-	75	5	1.8
S5L1GP-	105	7	2.4
S5L2G-	155	10	3.5
S5L3G-	235	15	5.4
S5L4G-	315	20	7.1
S5L5G-	395	25	9.1
S5L6G-	475	30	11

MODEL CODE

